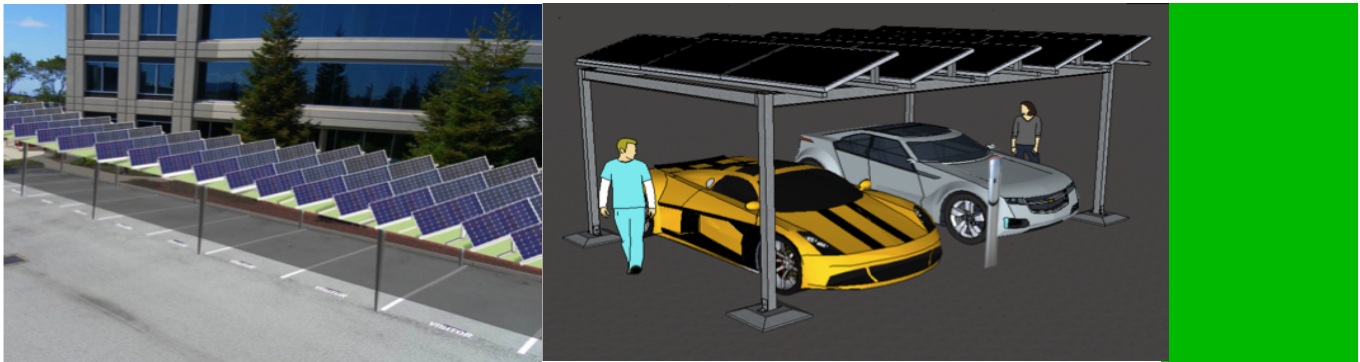


# EZ Solar North-South Canopy



The EZ Solar Canopy provides the best return on your investment. It has been designed and engineered for low cost, easy assembly and quick installation. Carports offer shade and shelter for your customers and employees, while reducing your environmental footprint and your energy costs.

The orientation of your parking lots will not be an issue with the EZ Solar Canopy family: it has been engineered to maximize power production in parking lots of every orientation. The North-South Carport is designed with flexibility for installation over North-South oriented parking rows without the hassle and expense of redesign.

DirectNu Energy provides turnkey solar carport solutions, including solar modules, inverters and EV Chargers. Our cutting edge EZ Solar Carport is compatible with most brands of PV modules and when integrated with high efficiency inverters, the system will harness the maximum solar energy possible. This provides maximum power for minimal size and minimal cost.

## TURNKEY SOLUTIONS

Our Solar Canopy-Carport Solutions are complete and easy to install

## TESTING & CERTIFICATION

DirectNu's products are tested in a variety of conditions to guarantee specified performance. In addition, all products carry CE Certification

## TECHNICAL SUPPORT

DirectNu provides full technical support for our products as well as design and planning of systems to meet your needs

## SERVICES AVAILABLE

- Technical Support
- Installation and Setup
- Maintenance
- Repair Support
- Guaranteed Warranty

## EZ Solar North-South Canopy

The EZ Solar Canopy will demonstrate your commitment to clean energy, while being a smart and profitable investment that reduces your energy bills.

Modular design allows competitive pricing for any size project, from single residence to MW class. Scalability is a big benefit that brings the cost of installation down, decreases engineering costs and redesign costs for every installation

Design integrates value-added features including:

- EV Charging Stations. Additional units can be added as EV popularity grows.
- LED lighting for Safety and Security
- Electronic displays for Advertising and Customer Information
- Power storage for Off Grid options - and future On Grid distributed power management
- Wind Energy to generate additional power at suitable locations
- Aesthetically pleasing architectural features. Options enhance every decor
- Anti-Theft
- Sun & Rain protection
- Add-ons allow future expansion and improvement

Each structure is CE certified and has been designed to withstand the maximum structural loads due to snow, wind and earthquakes according to US standards.

- The latest in solar canopy-carport solutions.

“Out of the Box”

Attractive

Pre-engineered

- Easy to install
  - No on-site welding
  - No surface finishing
- Modular design: system can be extended to any size
- Compatible with most PV Modules
- Approximate Dimensions per 2 cars, 19' x 20'.
- Power depends on PV Module efficiency. Approximate rated power per 2 cars:  
North-South Rows – up to 4.8 kW